

Plant Disaster Challenge

NuTech-R

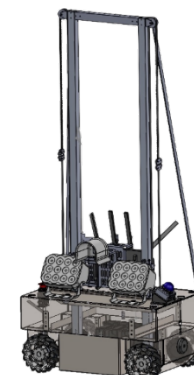
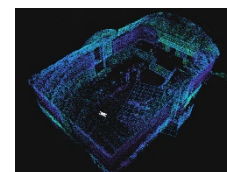
NUT (Niigata, Japan)

F-REI



Key Development Points

We develop our robots with a focus on real disaster site applications as well as competitions. Our student-led team works consistently on everything from hardware to software. Our robots feature mobility, arm-based operations, inspection, and analysis functions to support digital twin technology. In competitions, we use two robots together with a drone to perform tasks efficiently.



Team Introduction

[Motivation]

We started the team to advance disaster response robotics and find challenges through competitions.

[Outlook]

Our goal is to develop robots and drones that make a real difference in society

Role	Name	Affiliation/Position	Affiliation/PositionAreas of expertise, research fields
Team leader	Haruki Hasegawa	Master's student at Nagaoka University of Technology	Software design for Rescue Robots
Hardware Development	Hiroha Toba	Master's student at Nagaoka University of Technology	Hardware design for Rescue Robots
Software Development	Min Pyae Sone	Master's student at Nagaoka University of Technology	Image processing, HCI
Software Development	Yuki Numoto	Master's student at Nagaoka University of Technology	Simulator
Robot Operator	Shuta Ogura	Master's student at Nagaoka University of Technology	Software design
Software Development	Mutsuki Kawabata	Bachelor's student at Nagaoka University of Technology	Image processing
Hardware Development	Takumi Watanabe	Bachelor's student at Nagaoka University of Technology	Hardware design for Rescue Robots
Hardware Development	Yuto Otsuki	Bachelor's student at Nagaoka University of Technology	Drone

